






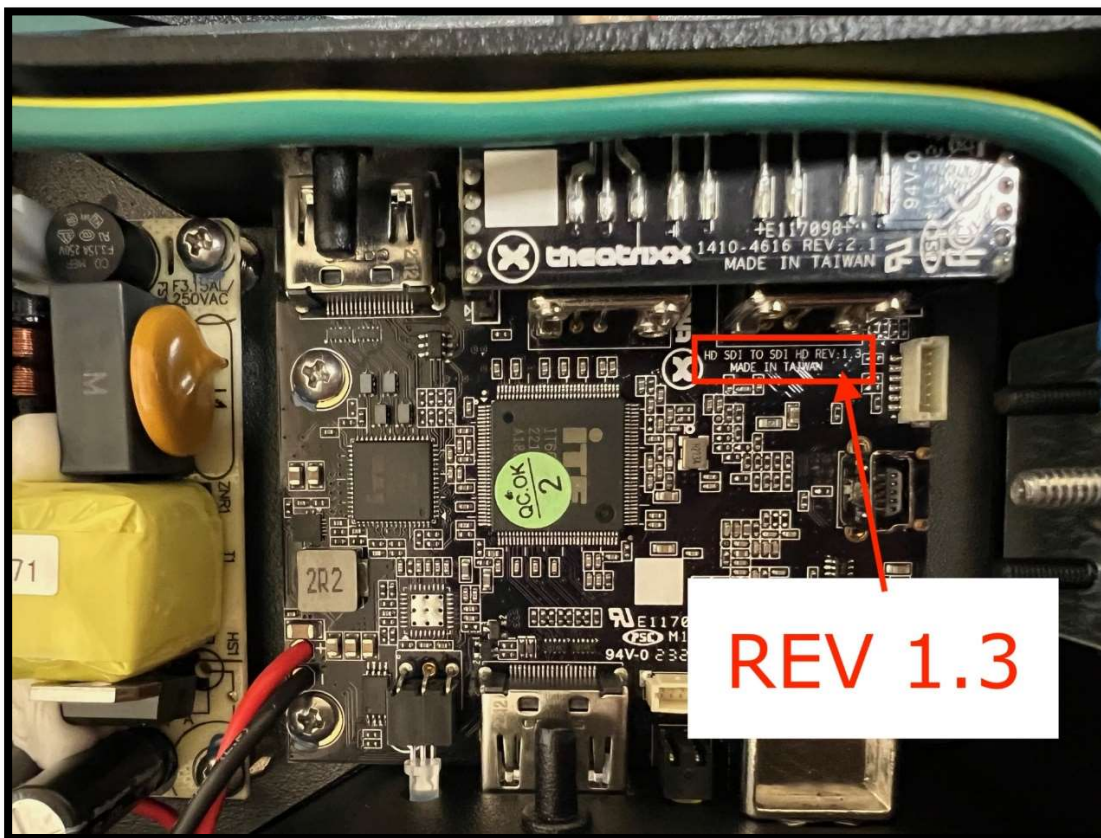


## 1.0 xvfwup Application setup

- 1.1. Extract Folder:  xVision\_Converter\_FW\_upgrader
- 1.2. Keep the **xvfwup** application within the xVision\_Converter\_FW\_upgrader folder. To run correctly, the application must be launched with the config file in the same folder.

 .DS_Store	2024-07-11 4:03 PM	DS_STORE File	7 KB
 config	2024-07-11 4:03 PM	Configuration settings	14 KB
 xvfwup	2024-07-11 4:03 PM	Application	483 KB
 Firmwares	2024-07-11 4:05 PM	File folder	

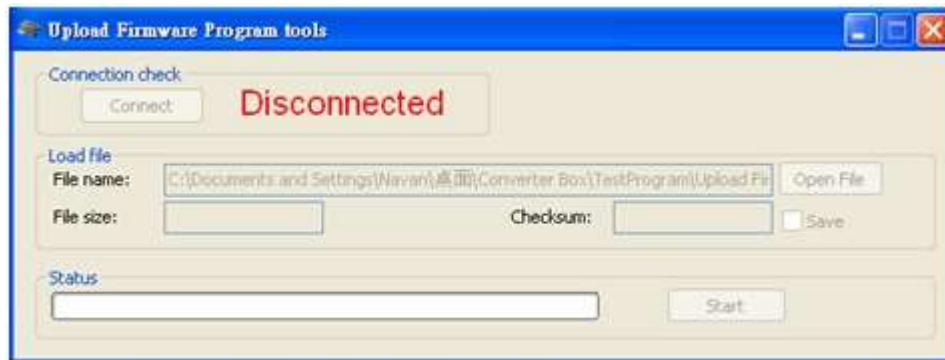
- 1.3. For ease of use, insert the needed firmwares inside the empty **Firmwares** folder.
  - 1.3.1. The installed firmware must match the model and revision of the main board.
  - 1.3.2. To know which version is needed, look on the main board for a revision number.



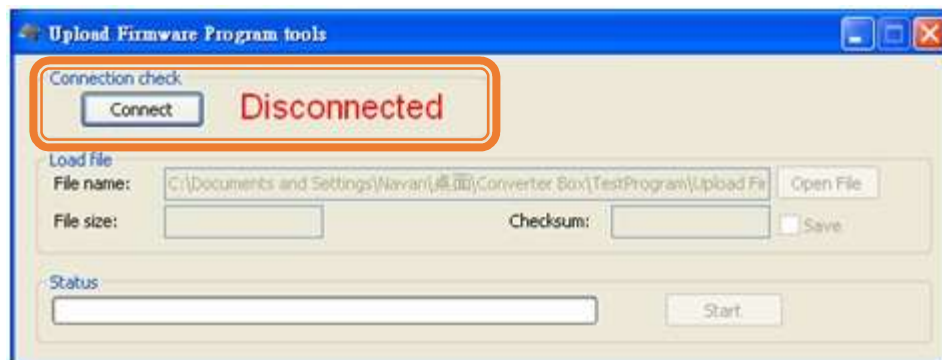


## 2.0 Firmware Update - updatable in the field using the integrated USB port

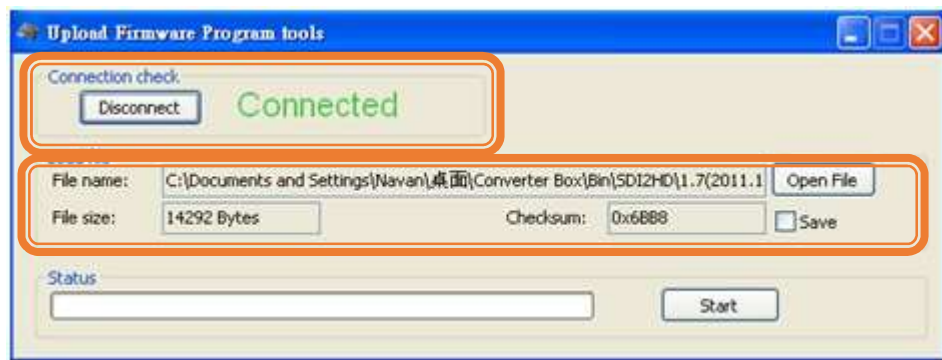
2.1. Open the **xvfwup** application and connect to the unit using a USB to mini-USB cable.



2.2. Power on the Converter (the connection check status will be changed to “Connect”). Click the Connect button.

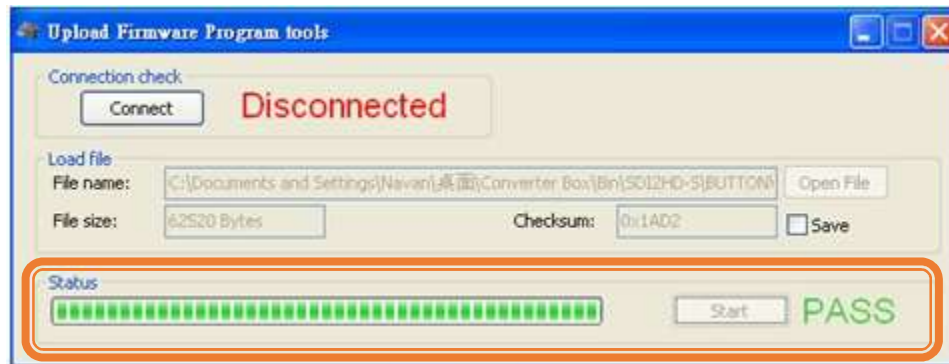


2.3. Unplug and plug in the power cable again (the connection check status will be changed to “Connected”). Click the Open File button to select the firmware « .bin » file.





- 2.4. Click the “Start” Button to proceed with uploading the new firmware. The PASS message will appear when the process is successfully completed.



- 2.5. Close the **xvfwup** application.

